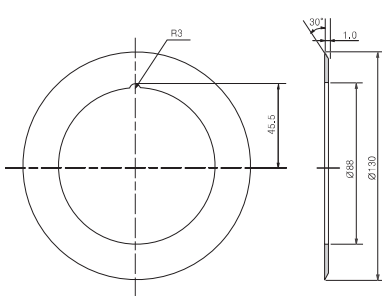


# SLITTER KNIFE

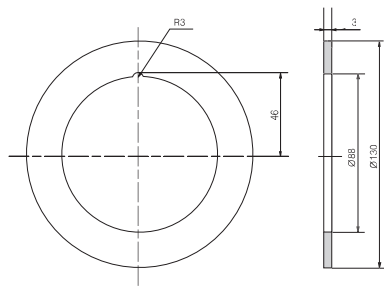
## CIRCULAR KNIFE USE for BATTERY FILM / SUPER(ULTRA)CAPACITOR FILM



### UPPER BLADE



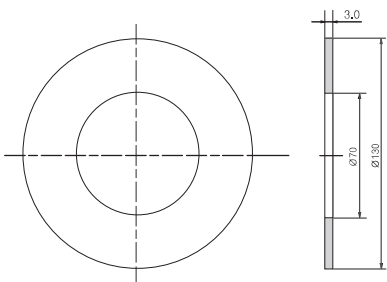
130×88×1, 30°



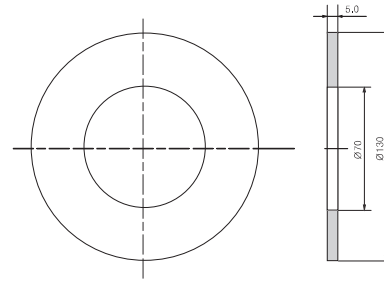
130×88×3, 90°

UPPER BLADE			
OD	ID	T	ANGLE
130	88	1	30
130	88	3	90
BOTTOM BLADE			
OD	ID	T	ANGLE
130	70	3	90
130	70	5	90
130	70	5.02	90

### BOTTOM BLADE



130×70×3, 90°



130×70×5, 90°

- Parallelism : 5μm
- Flatness : 5μm
- Concentricity : 10μm

**BESA** CORP

ADD : 40, Techno-daero 2-gil, Hyeonpung-myeon, Dakseong-gun, Daegu, KOREA  
 TEL : +82.53.588.0800(ref) FAX : +82.53.588.7707  
 www.besablade.com E-mail : besa@besablade.com

# **BESA** Cutter Knife

---

**SLITTER KNIFE**

---

**CIRCULAR KNIFE FOR  
BATTERY FILM SLITTING**

---

**CIRCULAR KNIFE FOR FCCL  
SLITTING**

---

**RECTANGULAR & PENTAGON  
FOR FILM SLITTING**

---



**BESA**

# SLITTER KNIFE

- Longest life time by ultra fine carbide grade (WC : 0.2µm)
- Various Material Tungsten Carbide, Zirconia Ceramic, Sapphire.
- Chip free sharp edge by special Machine.
- Acceptable for customer design.
- Application - Flexible/rigid Board, Rubber Industry(Belt, tire..)

Adhesive Tape, Condenser Film, Lithium Battery Film,  
Printing Machine Slitter Knife

## RECTANGULAR KNIFE USE for FILM



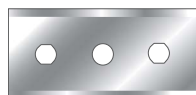
SA 401125 SE



TC 351550 SE



TC 601315 SE



TC 432230 DE



TC 380830 SE



TC 1101830 SE



TC 391825 SE



TC 402025 SE



TC 381723 SE  
+ Back Cover



CR 571938 DE

**CODE ANALYSIS**

EX

**CR - 5 7 1 9 3 8 - DE**

SE: SINGLE EDGE  
DE: DOUBLE EDGE

THICKNESS  
(38:380µ, 30:300µ, 25:250µ)  
15:150µ

WIDTH  
(19:19mm, 22:22mm)

LENGHT  
(57:57mm, 43:43mm)

MATERIAL  
(CR: CERAMIC)  
(SA: SAPPHIRE)  
(TC: TUNGSTEN CARBIDE)

■ MIN T: 0,08mm

## USE for POLARIZER



TC 600826 SE



TC 1001330 SE



CR 1402220 SE

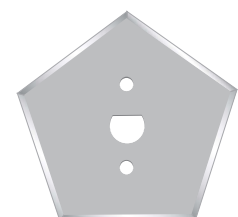
## POLARIZER Selvedge cutter



## PENTAGON BLADE USE for BOPP



CR PENTAGON  
63×40×0.53



TC PENTAGON  
63×40×0.53

**CODE ANALYSIS**

EX

**TC - 6 0 0 8 2 6 - SE**

SE: SINGLE EDGE  
DE: DOUBLE EDGE

THICKNESS  
(38:380µ, 30:300µ, 25:250µ)  
15:150µ

WIDTH  
(19:19mm, 22:22mm)

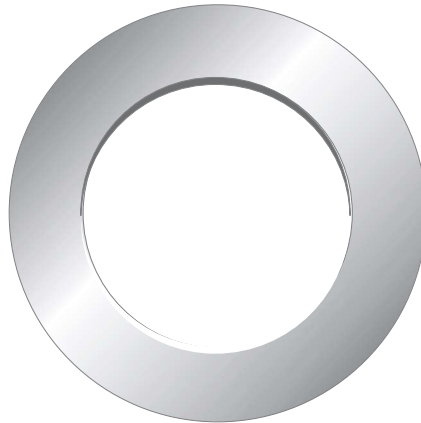
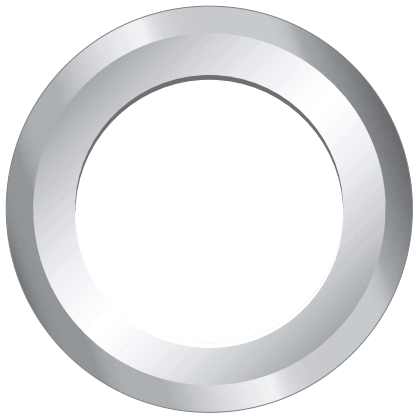
LENGHT  
(57:57mm, 43:43mm)

MATERIAL  
(CR: CERAMIC)  
(SA: SAPPHIRE)  
(TC: TUNGSTEN CARBIDE)

■ MIN T: 0,08mm

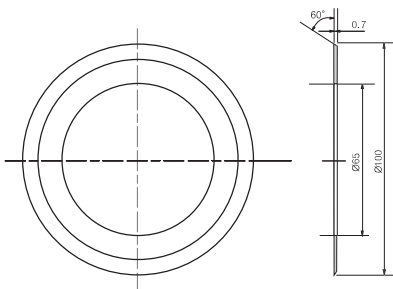
# SLITTER KNIFE

## CIRCULAR KNIFE USE for FCCL

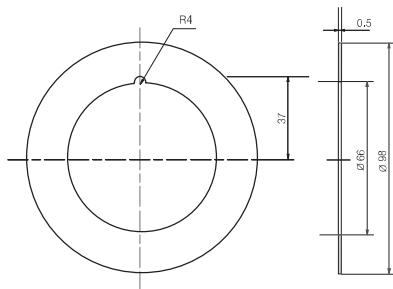


- Parallelism : 5 $\mu$ m
- Flatness : 5 $\mu$ m
- Concentricity : 10 $\mu$ m

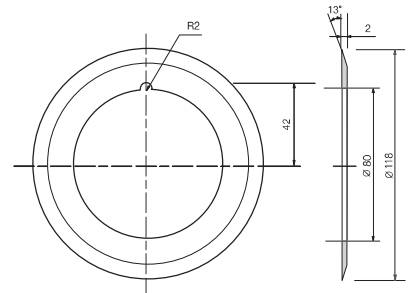
### UPPER BLADE



100×65×0.7, 60°

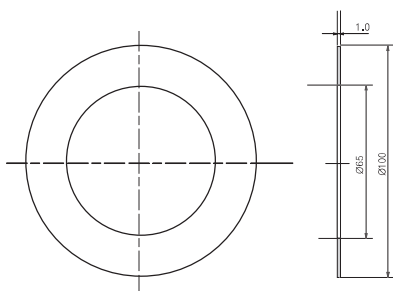


98×66×0.5, 90°

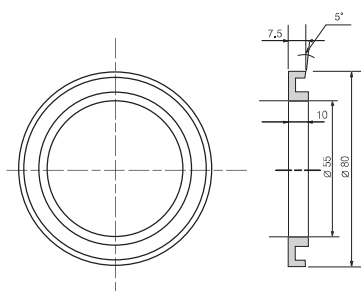


118×80×2, 13°

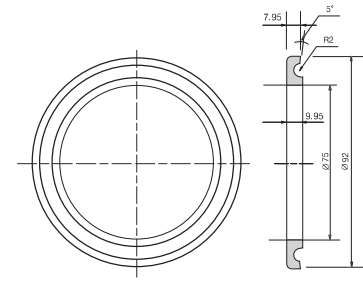
### BOTTOM BLADE



100×65×1, 90°



80×55×10(7.5), 5°

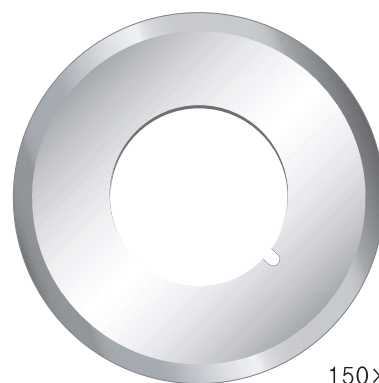


92×75×7.95, 5°

CIRCULAR KNIFE for Photopile film EVA sheet, Back Sheet, PVB sheet.



150×110×1.1T, 60°



150×70×3.0T, 15°, 60°